

Dahlan-ljair-sinta2.pdf

by

Submission date: 11-Feb-2021 04:02PM (UTC+1100)

Submission ID: 1506898599

File name: Dahlan-ljair-sinta2.pdf (292.58K)

Word count: 3033

Character count: 14961

6
**Data Envelopment Analysis with Lower Bound on Input to
Measure Efficiency Performance of Department in
Universitas Malikussaleh**

Dahlan Abdullah¹, Cut Ita Erliana², Muhammad Fikry³

¹Department of Informatics, Universitas Malikussaleh, Aceh Utara, Aceh, Indonesia

²Department of Industrial Engineering, Universitas Malikussaleh, Aceh Utara, Aceh, Indonesia

³Life Science and System Engineering Kyushu Institute of Technology, Japan

¹dahlan@unimal.ac.id*

ARTICLE INFO

Article history:

Received : 09-04-2020

Revised : 20-05-2020

Accepted : 01-06-2020

Keywords:

Data Envelopment Analysis

Decision-Making Unit

Efficiency

Bounded Input

ABSTRACT

DEA has become one of the most appropriate methods for comparing the various Decision-Making Units (DMU) associated with public services such as universities. There are two primary outputs that can be used to measure college performance, namely: the number of graduates and the number of publications. While the primary input of college efficiency measurement is the number of teaching staff and the number of students. The higher learning institution is Universitas Malikussaleh, located in Lhokseumawe, a city in the Aceh province of Indonesia. This paper develops a method to evaluate the efficiency of all departments in Universitas Malikussaleh using DEA with bounded input. The extreme dissimilarity between the weights often found in DEA applications. In this paper, we develop a new DEA model, which can be transformed into a particular case of the bi-level linear program to calculate the lower boundary of input from the pessimistic viewpoints based on the shortcomings of the existing approaches. In the case of having a single input, providing lower bounds for the input weights by imposing the conditions that it uses for the average input level of the DMU being assessed uses per unit of output. Accordingly, we present some essential differences inefficiency of those departments. Finally, we discuss the effort that should be made by those departments in order to become efficient.

Copyright © 2017 International Journal of Artificial Intelligence Research.
All rights reserved.

I. Introduction

DEA has become one of the most appropriate methods for comparing the various Decision-Making Units (DMUs) associated with public services such as universities [1]. Research conducted by [2] has two main outputs that can be used to measure college performance, namely: the number of graduates and the number of publications. On the other hand, research conducted by [3] that the primary input of college performance measurement is the number of teaching staff and the number of students.

Wu *et al.* [4] have examined that an astonishing number of outputs may arise in the form of deviations of the resulting output, based on the existing input parameters, when there is no limit to the output. This is seen in the study by [5] conducted a study on the efficiency of school performance in Greece by using a lower bound on the input and upper bound on the output, where an inefficient Decision-Making Unit (DMU) can occur. The primary constraint when establishing bounded on input and output based on the results of research conducted by [5] in the presence of missing value on input and output, and [5] corrected the missing value by using Fuzzy DEA. Abdullah *et al.* [6] have used Artificial Neural Network for optimizing DEA in order to predict the efficiency of the new patterns.

In [7], users lower bounds input and upper bounds output to define the limits of efficiency measurement. Branda [8] suggests a DEA-oriented method of studying the relationship between input and output. Li *et al.* [9] have examined Stochastic DEA (SDEA), which suggests an efficient way of obtaining upper and lower bounds of inputs and outputs based on several existing constraints.

Hassani and Malkhalifeh [10] proposed an interval model in evaluating the upper and lowered bound values for inputs and outputs and found that the DMU used for the determination of the lower bound the worst DMU and the DMU used for upper bound determination is the best DMU. For every type of comparisons, they proposed two models to get the worst performance of each DMU as well the best performance, and then achieved the upper and lower bound evaluation. Entani *et al.* [11] proposed a pessimistic DEA model for minimizing the efficiency of each DMU with the constraint that the maximum efficiency of all DMUs is one, and get an interval efficiency evaluation, which is further improved by [12] and Parchikolaie [13]. It was stated that interval DEA analyzes the performance of all DMUs more in detail than the traditional DEA. Additionally, Wang & Yang [14] proposed the interval efficiency evaluation with the constraint that the efficiency of each DMU is not greater than one and not less than a lower bound, which is determined by a virtual anti-ideal DMU and is improved by [15]. The extreme dissimilarity between the weights often found in DEA applications [16]. Fang and Li have used lower bound in input for cost efficiency measure [17]. Brieu and Dervaux [18] have used lower bound in input for Firm's Allocative Efficiency. Abdullah *et al.* [19] have used DEA with upper bound on the output to measure the efficiency performance of higher learning institutes. The research of Abdullah *et al.* [19] is output-oriented, and there must another research with input-oriented in the case of lower bound in the input.

Therefore in DEA, we should have a set of DMUs, multiple outputs, and multiple inputs. In the higher education system, DMU could be Departments to produce two outputs, such as the number of graduates (y_1) and the number of publications (y_2), form input, the number of teaching staff (x). This paper aims to evaluate the efficiency of all departments of Universitas Malikussaleh using DEA. We use DEA with the CCR model with input-oriented. In this case, the input variables are bounded. We show how to implement this bound in a DEA framework to Measure the Efficiency Performance of the Department in Universitas Malikussaleh.

The mathematical model of DEA proposed by CCR is fractional programming aimed to measure the efficiency of any DMU. The objective function of the model is to maximize a ratio of the sum of weighted output and the sum of weighted input with constraints of a similar ratio for every DMU, which should be at most one. The fractional programming model can be expressed as follows.

$$\text{Maximize } \alpha = \frac{\sum_{r=1}^k u_r y_{r0}}{\sum_{s=1}^l v_s x_{s0}} \quad (1)$$

Subject to

$$(1) \frac{\sum_{r=1}^k u_r y_{rj}}{\sum_{s=1}^l v_s x_{sj}}; \quad j = 1, \dots, n \quad (2)$$

$$u_r, v_s \geq 0; \quad r = 1, \dots, k; \quad s = 1, \dots, l$$

In the model, there is n number of DMUs with k number of outputs resulting from l number of inputs. $y_{rj} (>0)$ is the number of the output of the j^{th} DMU, and $x_{sj} (>0)$ is the number of input of the j^{th} DMU. u_r and v_s are the variable weights to be determined after solving the model.

The (1) is in the form of fractional programming, and it would be computationally intractable, mainly when the number of DMUs is large. Therefore it is necessary to convert the model (1) into a linear programming problem, as proposed by [20], which can be written as follows (input-oriented).

$$\text{Minimize } \beta = \sum_{r=1}^k v_r x_{sj} \quad (3)$$

Subject to

$$\begin{aligned} \sum_{s=1}^l u_r y_{rj} &= 1 \\ \sum_{r=1}^k u_r y_{rj} - \sum_{s=1}^l v_s x_{sj} &\leq 0; \quad \forall j \\ u_r, v_s &\geq 0 \quad \forall r, \forall s \end{aligned} \quad (4)$$

II. Research Method

The phase of the research process can be seen as in Fig. 1.

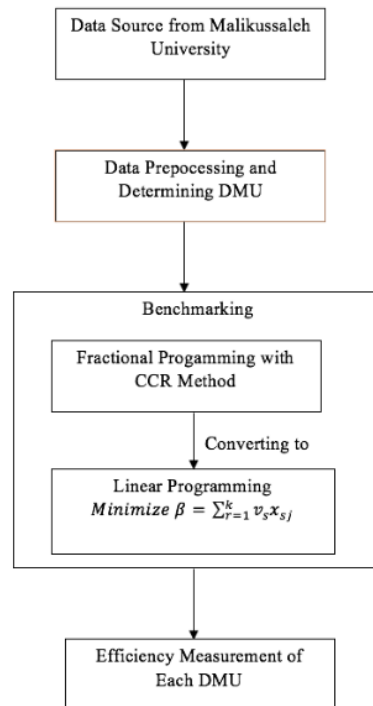


Fig. 1. Research Method

Fig. 1 shows that the data source from Universitas Malikussaleh will process in the data preprocessing step, and the process also determines the DMU for measure efficiency performance in Universitas Malikussaleh. In the next step, there is a benchmarking process that consists of steps for converting the fractional programming with CCR Method into Linear Programming with lower bound in the input. After this process, we will get the result of the efficiency measurement of each DMU.

III. Result and Discussion

Universitas Malikussaleh is a state university located at Lhokseumawe city of Aceh province, Indonesia. The name Malikussaleh comes from the name of the first king of the well-known kingdom Samudra Pasai. This university has 30 Departments with around 20000 students.

The data of 19 Departments (DMU) with two outputs and two inputs are shown in Table 1. There are 11 departments that are still new. Therefore they do not have graduates yet. As a consequence, these 11 departments are not included in Table 1

Table 1. List of DMU with Input and Output Data

No	Dmu	Input		Output	
		Number of teaching staff	Number of students	Number of research	Number of graduates
1	Information technology	17	588	5	610
2	Civil engineering	26	747	5	533
3	Architectural engineering	15	396	5	195
4	Industrial engineering	17	467	5	300
5	Chemical engineering	25	348	5	252
6	Mechanical engineering	23	499	5	224
7	Electrical engineering	19	420	5	326
8	Agribusiness	17	689	5	273
9	Agro-technology	34	822	5	284
10	Aquaculture	10	501	5	204
11	Communication science	11	719	5	273
12	Political science	11	262	5	183
13	Sociology	13	487	5	204
14	Anthropology	9	173	5	116
15	Jurisprudence	50	1096	10	467
16	Medicine	30	278	4	257
17	Management	48	1265	5	1302
18	Economic development	11	853	5	290
19	Accounting	23	1127	5	417

Using the model (3), we can find the score of efficiency. For example, for DMU1 (Department of Information Technology), the linear programming model can be written as follows.

Minimize $17 V_1 + 588 V_2$

Subject to

$$610 U_1 + 5 U_2 = 1$$

$$610 U_1 + 5 U_2 - 17 V_1 - 588 V_2 \leq 0$$

$$533 U_1 + 5 U_2 - 26 V_1 - 747 V_2 \leq 0$$

$$195 U_1 + 5 U_2 - 15 V_1 - 396 V_2 \leq 0$$

$$300 U_1 + 5 U_2 - 17 V_1 - 467 V_2 \leq 0$$

$$252 U_1 + 5 U_2 - 25 V_1 - 348 V_2 \leq 0$$

$$224 U_1 + 5 U_2 - 23 V_1 - 499 V_2 \leq 0$$

$$326 U_1 + 5 U_2 - 19 V_1 - 420 V_2 \leq 0$$

$$273 U_1 + 5 U_2 - 17 V_1 - 689 V_2 \leq 0$$

$$284 U_1 + 5 U_2 - 34 V_1 - 822 V_2 \leq 0$$

$$204 U_1 + 5 U_2 - 10 V_1 - 501 V_2 \leq 0$$

$$273 U_1 + 5 U_2 - 11 V_1 - 719 V_2 \leq 0$$

$$183 U_1 + 5 U_2 - 11 V_1 - 262 V_2 \leq 0$$

$$204 U_1 + 5 U_2 - 13 V_1 - 487 V_2 \leq 0$$

$$116 U_1 + 5 U_2 - 9 V_1 - 173 V_2 \leq 0$$

$$467 U_1 + 5 U_2 - 50 V_1 - 1096 V_2 \leq 0$$

$$257 U_1 + 5 U_2 - 30 V_1 - 278 V_2 \leq 0$$

$$1302 U_1 + 5 U_2 - 48 V_1 - 1265 V_2 \leq 0$$

$$290 U_1 + 5 U_2 - 11 V_1 - 852 V_2 \leq 0$$

$$417 U_1 + 5 U_2 - 23 V_1 - 1127 V_2 \leq 0$$

$$U_1, U_2, V_1, V_2 \geq 0$$

END

7

The result from processing using Model (3) showed in Table 2.

Table 2. Result of Efficiencies for Each DMU using Lower Bound in Input

No	DMU	DEA score
1	information technology	1.0
2	civil engineering	1.43
3	architectural engineering	1.47
4	industrial engineering	1.42
5	chemical engineering	1.24
6	mechanical engineering	1.89
7	electrical engineering	1.21
8	agribusiness	1.5
9	agro-technology	2.62
10	aquaculture	1
11	communication science	1
12	political science	1
13	sociology	1.27
14	anthropology	1
15	jurisprudence	2.02
16	medicine	1.0391
17	management	1
18	economic development	1
19	accounting	1.7

From the Table 2, DMU 1, 10, 11, 12, 14, 17, and 18 are efficient. Another DMU is inefficient. For inefficient DMU, we can use the Slack-Based Measure in determining the input surplus. The slack value of each DMU can be seen in Table 3.

Table 3. Slack Value for The Inefficient DMU

No	DMU	Slack Value
1	civil engineering	0.48
2	architectural engineering	0.47
3	industrial engineering	0.42
4	chemical engineering	0.45
5	mechanical engineering	0.67
6	electrical engineering	0.38
7	agribusiness	0.67
8	agro-technology	0.82
9	sociology	0.68
10	jurisprudence	0.78
11	medicine	0.58
12	accounting	0.7

We will deal with n DMUs (Decision Making Units) with the input and output matrices $X = (x_{ij}) \in R^{m \times n}$ and $Y = (y_{ij}) \in R^{s \times n}$, respectively. We assume that the data set is positive, i.e., $X > 0$ and $Y > 0$. The production possibility set P is defined as [21].

$$P = \{(x, y) \mid x \geq X\lambda, y \leq Y\lambda, \lambda \geq 0\} \quad (5)$$

We consider an expression for describing a certain DMU (x_0, y_0) as

$$\begin{aligned} x_0 &= X\lambda + S^- \\ y_0 &= Y\lambda - S^+ \end{aligned} \quad (6)$$

From the expression in (5) and (6), we can reduce the number of input; in this case, the number of students can be reduced. For example, in DMU 19 from Table 2. DMU Accounting had many students in 1127, and the slack value is 0.7. So, the student of DMU Accounting must be reduced to:

$$V_2 = 1127 - 1127 \cdot 0.7 = 338$$

6

After we reduce the number of student in DMU Accounting become 338. The DEA Score becomes efficient.

IV. Conclusion

First, this research can be seen that there is a bounded input strategy that can determine well the amount of input needed to produce an output so that no excess input. In contrast, the resulting output is not maximal; from the college side, this can be burdensome from the side of teaching. Second, for less efficient departments or DMUs, it can reduce the number of students based on the slack values gained for each DMU. Third, based on reducing the number of students according to slack value, can make the existing DMU efficient.

References

- [1] T. Rosenmayer, "Using Data Envelopment Analysis: A Case of Universities," *Rev. Econ. Perspect.*, vol. 14, no. 1, Jan. 2014.
- [2] N. Hussein, S. Omar, F. Noordin, and N. A. Ishak, "Learning Organization Culture, Organizational Performance and Organizational Innovativeness in a Public Institution of Higher Education in Malaysia: A Preliminary Study," *Procedia Econ. Finance*, vol. 37, pp. 512–519, 2016.
- [3] Etzkowitz, "University-Industry-Government Interaction: The Triple Helix Model of Innovation," *Asia Pac. Tech Monit.*, vol. 24, no. 1, pp. 14–23, 2007.
- [4] J. Wu, P. Yin, J. Sun, J. Chu, and L. Liang, "Evaluating the environmental efficiency of a two-stage system with undesired outputs by a DEA approach: An interest preference perspective," *Eur. J. Oper. Res.*, vol. 254, no. 3, pp. 1047–1062, Nov. 2016.
- [5] Y. G. Smirlis, E. K. Maragos, and D. K. Despotis, "Data envelopment analysis with missing values: An interval DEA approach," *Appl. Math. Comput.*, vol. 177, no. 1, pp. 1–10, Jun. 2006.
- [6] D. Abdullah, Tulus, S. Suwilo, S. Effendi, and Hartono, "DEA Optimization with Neural Network in Benchmarking Process," *IOP Conf. Ser. Mater. Sci. Eng.*, vol. 288, p. 012041, Jan. 2018.
- [7] W. W. Cooper, J. T. Pastor, F. Borras, J. Aparicio, and D. Pastor, "BAM: a bounded adjusted measure of efficiency for use with bounded additive models," *J. Product. Anal.*, vol. 35, no. 2, pp. 85–94, Apr. 2011.
- [8] M. Branda, "Reformulations of input–output oriented DEA tests with diversification," *Oper. Res. Lett.*, vol. 41, no. 5, pp. 516–520, Sep. 2013.
- [9] W. Liu, Y.-M. Wang, and S. Lyu, "The upper and lower bound evaluation based on the quantile efficiency in stochastic data envelopment analysis," *Expert Syst. Appl.*, vol. 85, pp. 14–24, Nov. 2017.
- [10] T. Hassani and M. Rostamy-Malkhalifeh, "Efficiency of decision making units in network DEA using interval data," p. 8, 2016.
- [11] T. Entani, Y. Maeda, and H. Tanaka, "Dual models of interval DEA and its extension to interval data," *Eur. J. Oper. Res.*, vol. 136, no. 1, pp. 32–45, Jan. 2002.
- [12] T. Entani and H. Tanaka, "Improvement of efficiency intervals based on DEA by adjusting inputs and outputs," *Eur. J. Oper. Res.*, vol. 172, no. 3, pp. 1004–1017, Aug. 2006.
- [13] B. Rahmani Parchikolaei, "The lower limit of interval efficiency in Data Envelopment Analysis," *Data Envel. Anal. Decis. Sci.*, vol. 2015, no. 1, pp. 58–66, 2015.
- [14] Y.-M. Wang and J.-B. Yang, "Measuring the performances of decision-making units using interval efficiencies," *J. Comput. Appl. Math.*, vol. 198, no. 1, pp. 253–267, Jan. 2007.
- [15] H. Azizi and Y.-M. Wang, "Improved DEA models for measuring interval efficiencies of decision-making units," *Measurement*, vol. 46, no. 3, pp. 1325–1332, Apr. 2013.
- [16] N. Ramón, J. L. Ruiz, and I. Sirvent, "A multiplier bound approach to assess relative efficiency in DEA without slacks," *Eur. J. Oper. Res.*, vol. 203, no. 1, pp. 261–269, May 2010.
- [17] L. Fang and H. Li, "Lower bound of cost efficiency measure in DEA with incomplete price information," *J. Product. Anal.*, vol. 40, no. 2, pp. 219–226, Oct. 2013.
- [18] W. Briec, B. Dervaux, H. Leleu, W. Briec, B. Dervaux, and H. Leleu, *A DEA Estimation of a Lower Bound for Firms' Allocative Efficiency Without Information on Price Data*. 2007.
- [19] D. Abdullah, T. Tulus, S. Suwilo, S. Efendi, M. Zarlis, and H. Mawengkang, "A Research Framework for Data Envelopment Analysis with Upper Bound on Output to Measure Efficiency Performance of Higher Learning Institution in Aceh Province," *Int. J. Adv. Sci. Eng. Inf. Technol.*, vol. 8, no. 2, 2018.

Dahlan Abdulah et al (Data Envelopment Analysis with Lower Bound on Input to Measure Efficiency Performance of Department in Universitas Malikussaleh)

- [20] A. Charnes, W. W. Cooper, and E. Rhodes, "Measuring the efficiency of decision-making units," *Eur. J. Oper. Res.*, vol. 3, no. 4, p. 339, Jul. 1979.
- [21] K. Tone, "A slacks-based measure of efficiency in data envelopment analysis," *Eur. J. Oper. Res.*, p. 12, 2001

ORIGINALITY REPORT

20%

SIMILARITY INDEX

9%

INTERNET SOURCES

9%

PUBLICATIONS

2%

STUDENT PAPERS

PRIMARY SOURCES

1

www.ijair.id

Internet Source

3%

2

Dahlan Abdullah, Tulus ., Saib Suwilo, Syahril Efendi, Hartono ., Cut Ita Erliana. "A Slack-Based Measures for Improving the Efficiency Performance of Departments in Universitas Malikussaleh", International Journal of Engineering & Technology, 2018

Publication

2%

3

Submitted to Universiti Malaysia Pahang

Student Paper

1%

4

insightsociety.org

Internet Source

1%

5

Wenli Liu, Ying-Ming Wang, Shulong Lyu. "The upper and lower bound evaluation based on the quantile efficiency in stochastic data envelopment analysis", Expert Systems with Applications, 2017

Publication

1%

6	Internet Source	1%
7	repository.unimal.ac.id Internet Source	1%
8	Submitted to President University Student Paper	1%
9	Johan, Johanes Terang Kita Perangin Angin, Sukiman, Yuliana, Benny, Awan. "Benchmarking Application for Student Activity Unit (UKM) in STMIK IBBI with Data Envelopment Analysis (DEA) Method", 2020 3rd International Conference on Mechanical, Electronics, Computer, and Industrial Technology (MECnIT), 2020 Publication	1%
10	ijair.id Internet Source	1%
11	Dahlan Abdullah, H Hartono, Erianto Ongko, Cut Ita Erliana et al. "DEA and Fuzzy Simple Additive Weighting for Benchmarking Qualitative Data", Journal of Physics: Conference Series, 2019 Publication	1%
12	zdoc.site Internet Source	1%

13	Chiang Kao. "Network Data Envelopment Analysis", Springer Science and Business Media LLC, 2017 Publication	<1 %
14	Hervé Leleu, Walter Briec. "A DEA estimation of a lower bound for firms' allocative efficiency without information on price data", International Journal of Production Economics, 2009 Publication	<1 %
15	Ruiyue Lin, Zhiping Chen, Wentao Xiong. "An iterative method for determining weights in cross efficiency evaluation", Computers & Industrial Engineering, 2016 Publication	<1 %
16	Khalili-Damghani, Kaveh, Madjid Tavana, and Francisco J. Santos-Arteaga. "A comprehensive fuzzy DEA model for emerging market assessment and selection decisions", Applied Soft Computing, 2016. Publication	<1 %
17	deazone.com Internet Source	<1 %