

PROCEEDING

SECOND ANNUAL
INTERNATIONAL
CONFERENCE 2009

ON
GREEN TECHNOLOGY
AND ENGINEERING



ENGINEERING FACULTY
MALAHAYATI UNIVERSITY
BANDAR LAMPUNG
INDONESIA

PROCEEDING
SECOND ANNUAL
UNIVERSITAS MALAHAYATI
INTERNATIONAL CONFERENCE
ON GREEN TECHNOLOGY AND
ENGINEERING

On April 15-17th,2009

Editor :

- 1. Assoc. Prof. Dr. Maizirwan Mel**
- 2. Assoc. Prof. Dr. Riza Muhida**
- 3. Assoc. Prof. Dr. Agus Geter E. S**
- 4. Dr. Moses L Singgih**
- 5. Mustofa Usman, Ph.D**
- 6. Agung Efriyo Hadi, M.Sc**
- 7. Dr. Ir. Hardoyo, M.Eng**



UNIVERSITAS MALAHAYATI
BANDAR LAMPUNG
2009

CONTENT

HALAMAN JUDUL

FOREWORD

CONTENT

PAPER

CIVIL ENGINEERING

Behavior of interlocking load bearing hollow PUTRA blok panels with stiffeners under lateral load. Nisreen N. Ali	1
Water permeability of micronised blomass silica concrete Suraya Hani Adnan	6
Evaluation of raw water supply capacity from Wonorejo reservoir to the water demand in Surabaya Tri Budi Prayogo	10
Study dispersion effect of wave propagation over mangrove models in shallow water using 2 – D hyperbolic wave equation Ahmad Zakaria	18
Study velocities and dispartion effects of wave propagation over mangrove models using 2 – D non-linier and comparasional wave equation Ahmad Zakaria	24
Analysis wave diffraction using 2D hyperbola equation contamination in the dense settlemen Rina Febrina	30
Design & analysis of axysimmetric supersonic nozzle countur Bagus H. Jihad	35
The effect of working environmental on job satisfation & dissatisfation mong contruction professional Hardiman M. Yatim	44
Striving for green concetete with nylon 600 fiber Rr. M. I. Retno Soesilorini	52

Thermal effect of materials for ground covering and roofing in tropical city environment Sangkertadi	57
Interaction various elements in municipal solid waste management using a system dynamics approach M. Chaerul	63
Raifall - Runoff model based on Dawdy-O'Donnell model for Ungauged Catchment Kartini Susilowati	67
The evaluation of construction firms performance based on contractors visions on environmental concern Hardiman	73
Proposing water quality index calculation method for Indonesian water quality monitoring program Gatot Eko Susilo	79
Usage of channel filter septicktank to reduce coliform contamination in the dense settlement Yanto	85
Cement-coconut fiber-albumen composite (CCAC): Effect of fiber loading and curing time on the compressive strength S. Norshahida	91
Green Technology to enhance the ductility of concrete beam Rr. M. I. Retno Soesilorini	96
Free vibration analysis and dynamic behavior for beams with cracks Zuhir Ali Al-Talah	100
The potential eco-tour Way Kunit's jetty in management water front city of Teluk Lampung program Nur Arifani	106

ARCHITECTURE ENGINEERING

The contributions of trees to reduce environmental impact in urban area Julaihi Wahid	110
Low energy building in green architecture context: paradigm & manifesto for sustainable future Julaihi Wahid	116

Towards green approach in architecture design Julaihi Wahid	121
Quality of visual aesthetic of tree on street corridor landscape (case Malang) A. Tutut Subadyo	125
Conservation industrial heritage and tourism Dr. Krisprantono	130
Revitalizing historic urban quarters within environmental planning the case of Semarang Dr. Krisprantono	139
Eco-school for eco-city: school ground as a micro urban environment Paramita Atmodiwirjo	146
Small scale model testing: effects of insulation and air gap on interior temperature and module PV power output Nurhamdoko Boni	152

ENVIRONMENT ENGINEERING

Process improvement for production of pharmaceutical grade Ethanol using sweet sorghum Najiah Nadir	160
Adsorption of methyl orange onto polymer-based carbon coated monolith Darmadi	167
Coconut oil based biodiesel developmen: The power of local resources to support national Eki Hercules	172
Implementing of gasification technique for converting the rubber solid waste as source or renewable energy Didin Suwardin	177
The benefit and risk of bio-energy Djoko Suwarno	180
The future of PV development in Indonesia Didik Notosujono	185
Detection breast cancer from thermal infrared images by statistical characteristic Oky Dwi Nurhayati	185

TOWARDS GREEN APPROACH IN ARCHITECTURAL DESIGN

Julaihi Wahid¹ and Bambang Karsono²

¹ Julaihi Wahid, Assoc. Prof., B.Arch., M.Arch., PhD., is a lecturer at the School Of Housing Building and Planning, Universiti Sains Malaysia, 11800 Pulau Pinang (e-mail: julaihi@usm.my).

² Bambang Karsono, ST., MT., is PhD Student at the School Of Housing Building and Planning, Universiti Sains Malaysia, 11800 Pulau Pinang (e-mail: myvolkswagen74@yahoo.com)

Abstract

During the industrial revolution in the mid-1800s, the design of buildings came to depend less on ambient energy and more on the abundant supply of fossil fuels for their thermal comfort. Current trends in architecture and urbanism often continue to ignore the potential of passive measures to achieve the thermal comfort. The resulting impacts can be measured in several aspects, especially in environmental terms. There is an increasing acceptance among planners, urban designers and government officials that the current modes of human existence are unsustainable in the environmental terms. Some of the factors supporting this view are indications of global climate change, resource depletion, droughts, floods, local pollution and damage to the ecosystems (Brophy et al. 2000).

It is tempting to borrow the ancient view, and imagine the built environment as poised between the four ancient elements, such as: earth, water, air, fire, and interact with each other. At present such interaction is largely destructive rather than sympathetic. However, if the interaction were to become focus, either the building or the built environment, then it might be possible to reinstate these relationships around a sustainable and appropriate level of technology. The objective of this paper is to describe the downgraded of the quality of natural resources and how far architecture can contribute on them. The conclusion will discuss on green approach in architecture.

Keywords: *air, water, energy, natural resources, green architecture, green approach.*

1. THE DOWNGRADED

Human activities are altering the composition of the atmosphere in such a way that it traps more heat from the sun. This is the so-called 'green house effect'. The temperature inside the greenhouse rises when the sun shines on it because the glass is relatively transparent to the short-wave solar radiation and allows it to enter easily. When the radiation strikes the earth and plants in the greenhouse they are heated and give off long-wave heat radiation. This is less able to pass through the glass, which is relatively opaque to radiation at these longer wavelengths. Certain gases in the atmosphere such as carbon dioxide (CO₂) act like the glass in a greenhouse. They allow radiation to enter and warm the surface of the Earth, but they prevent the longer-wave heat radiation from escaping back into space. The Earth maintains a thermal equilibrium because the energy coming in from the sun is balanced by the heat that flows out. If less heat flows out because it is trapped in the atmosphere, the Earth's temperature will rise. The relevance with the building is the fact that 50 % of world fossil fuel consumption is related to the servicing of building, therefore 50 % of the carbon dioxide output is under the control of designers or inhabitants of buildings (Vale & Vale, 1991).

Buildings also use a prodigious quantity of water, both during their construction and during their occupation. The average domestic consumption is 160 liters per head of population per day in the UK, 220 liters per head per day in the US. In order to survive, the human body needs only about 1 liter per day and the average consumption of water in food and drink is about 2 liters per head per day (WCED, 1987). Building materials need large amount of water for their manufacturing process. Cement uses 3.6 tones of water for every tone of dry cement powder, but to make cement into concrete requires more water. The manufacture of a tone of steel uses 300 tones of water. Bricklaying and plastering are also large consumption of water at the building site. Once a building is completed, its water consumption will depend on its function. In domestic and office accommodation the largest single consumption of water is WC, in which flushing alone can contribute to about one third of the total water used by domestic sector. This is usually fresh water, purified and safe to drink, which is flushed straight back to the sewers.

Most people know of the hydrological cycle in which water is evaporated from the sea by the action of sunlight, condenses and falls as rain to the ground, where it fills the rivers and flows back to the sea. This solar-powered cycle is the source of all fresh water supplies; but here again the human activities

are interfering with a natural system. The water vapor that evaporates from the sea leaves behind the minerals that had been carried down the rivers. However in its passage through the atmosphere the water picks up the pollutants those human activities have pumped to the air.

Energy is a key problem to be tackled if humanity is to continue living on the Earth. The fuels used can be divided into two categories: finite and renewable. The finite fuels are those that are not renewable, such as: coal, oil, natural gas and uranium while renewable fuels are those that are derived from natural resources such as solar energy, wind power and water-power. The problem of finite fuel is that they can deplete at any time. Estimation of the amounts of the fossil fuels is decreasing. The following are based on studies by the Watt Committee on Energy in London (1980):

coal	11.000.000	Mtce
oil	510.000	Mtce
Natural gas	320.000	Mtce

mtce: million tones of coal equivalent

The immediate problem with these fuels is that they release carbon dioxide into atmosphere as they burn. Clearly if all the fossil fuels reserves were to be burned, almost all additional carbon would enter the atmosphere, and precipitate disaster. The discussion shows that there is no longer possible to follow based on a continuous development on increased fossil fuels use. A massive reduction in the energy used in buildings, achieved through a green approach to architecture, could move to a position where energy was no longer generated through burning fossil fuels. All could abandon the need for fossil fuels through a reassessment of current attitudes to buildings.

Building exist through the extracting materials for their construction from the earth, be it stone quarried direct from a stratum of rock or bricks made from baked clay. However, whether it is iron and glass, or the more modern aluminum and plastic, all materials are still won, or more precisely, wrenched, from the earth. The iron ore for producing steel, the bauxite ore for aluminum, the sand from which glass is made, are all extracted from the ground. Although, it is a common practice that building materials can be extracted out of the earth that is by digging them up and using them, but the processes of extraction, refining, fabrication and delivery are all energy-consuming. The energy used added to its share of pollution in the form of acid deposition and carbon dioxide.

The problem of deciding which building material causes the least global damage is complex. Firstly, it is the need to consider the direct impact on the environment – is it preferable, to quarry the

landscape for stone for building? In addition, the energy content of any material needs to be considered, for it offers a crude guide to the amount of pollution involved in its manufacturing. However, the choice of the materials becomes more complex in the manner in which it is used within the building as considered.

The built environment, then, relates to earth and water, fire and air, and its interaction with each of these elements is such that it involved the transfer of energy. In a world under threat, each transfer of energy needs to determine its implications, and whether it is really necessary.

2. GREEN APPROACH TO ARCHITECTURAL DESIGN: A DISCUSSION

The 'green' approach to architecture design is not a new approach. It has existed since human first set foot on earth and selected a south-facing cave rather than one facing north to achieve comfort in temperate climate. What is new is the realization of green approach to the built environment which involves a holistic approach to the design of buildings; where all the resources that go into building, either the materials, fuels or the contribution of the users is needed to be reconsidered if a sustainable architecture is to be produced.

a. Energy:

Past societies accepted the necessity of conserving energy and working with climatic principles without question. It is only with the recent proliferation of materials and technologies that the basis for ordinary building has been lost. Whether by the use of materials of the disposition of building elements, building modified climate to suit the needs of the users. The idea of community comes from the sheltering of people together, whether to provide maximum areas of shade and cooler air between buildings or to reduce the external surface area of the community as it faced the hostile weather. Recent buildings that have attempted to reduce dependency on fossil fuels have tended to stand alone as separate experiments rather than cluster in patterns that respond to local climate.



Fig. 1. Illustration of Priene City

In the West for example, before the widespread exploitation of fossil fuels the main energy was wood. As wood became scarce, it seemed natural to many citizens to make use of heat from the sun to reduce the need for wood to provide heat. The ancient Greeks were well aware of the benefits of solar design, and commonly arranged their houses to collect the rays of the winter sun. Greek cities such as Priene, following its relocation to avoid flooding were laid out on a grid plan with street running east-west to allow a southerly orientation of the buildings. The Romans continued the solar design principles that they learned from their contacts with the Greeks, for examples, they were able to make use of window glazing, developed in the first century, to increase the heat gained during winter into the building. The tradition of designing with climate to achieve comfort in buildings is not confined to the provision of warmth aspects. In many climates the problem that faces the architect is to cool the spaces in order to achieve a comfortable condition. The conventional modern solution is the provision of air conditioning systems which is no longer a crude process of opposing climate with energy, which was foolish when energy is cheap and pollution not considered, but is now verging on the insane.

b. Resources:

The minimizing of new resources is directed towards new buildings, it acknowledges that immense resources are already part of the existing building environment, and that the rehabilitation and upgrading of the existing building stock for minimal environmental impact is as important, if not more so, than the creation of a new green architecture. There are insufficient resources in the world for the built environment to be constructed for each generation; hence the issue of re-use and recycle are appearing. Re-use can take the form of recycling materials or recycling space. The recycling of both buildings and building components is part of history in architecture. St. Albans Abbey, for example, which was built between 1077 and 1115 on the site of Benedictine Abbey, used Romans bricks taken from the ruins of Verulamium at the bottom of the hill to reinforce the

walls of flint, the only building built of stone available in Hertfordshire. Often those who have accessed to resources is least to have demonstrated the way in which structures is designed for one purpose that can be adapted to suit the different need. However, the alterations are necessary that can often more or less obliterate the original form of the structure or building. This produce a dilemma for those concerned with the conservation of buildings. Should a building be preserved "unchanged" because it was once important, or should it be made useful, be conserved in a changed state? A green approach to the problem might suggest that the question be decided on resources alone. If the resources required to alter a building are less than for demolishing then the former course is adopted.

c. User:

The respect for user may appear to have a little relevance to the issues of pollution, global warming and destruction of ozone layer. But a green approach to architecture that includes respect for all the resources that contribute to construction of a building will not exclude human beings. All buildings are made by hand, but in some cases in architecture, this fact is acknowledged and appreciated, whereas others have attempted to deny the human dimension in a building process. The greater respect for human needs and labour can be evidenced in two separate ways. To the professional builder, it is essential that the materials and processes that form the buildings are as little pollution and dangerous to the individual worker or user as they are to the planet. Architects have begun to realize the extent of global or human poisons that may be found on the building sites, and it is no longer feasible to use materials that contain CFCs, or to use methods of timber treatment that are carcinogenic. A building that guzzles energy creates pollution and does not alienate its users. The most direct interpretation of the phrase that is to 'touch this earth lightly' would be the idea that the building "leaves it in the condition it was before the building was placed there".

d. Design Example:

An interesting example is the sculpture pavilion designed by Dutch architect Benthem Crouwel for the Sonsbeek '86 festival (Fig 2). This building was designed to protect a fragile works of a sculpture placed outside, and so the structure was intended to be almost invisible. It used only four basic materials: i.e. a precast concrete for the footings, laminated glass for the walls and roof, steel for trusses and connections are from silicone mastic to stick the panes of glass together. Fins of glass are glued to the glass walls which gave additional rigidity, and provided a place of attachment for the light steel trusses that carried the flat glass roof. The floor was

dirt, merely covered with wood shavings to prevent it becoming muddy. At the end of the event the building was dismantled and removed, the foundations were lifted and soil replaced, the shavings were raked up, and the site was completely unaltered by the events that had taken place. The building could be taken away to be use elsewhere for another exhibition, or recycled into another structure.

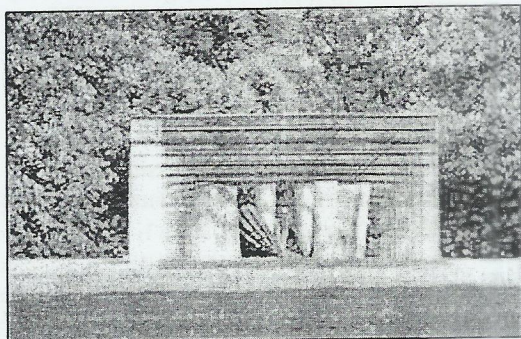
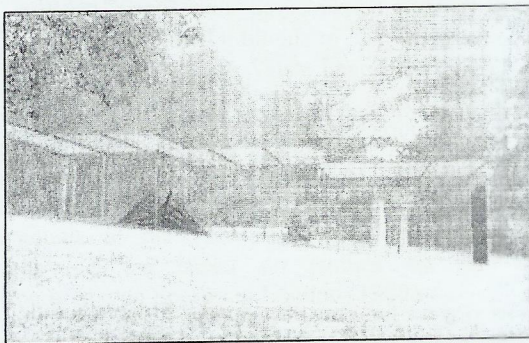


Fig.2. Sonsbeek Pavilion

3. CLOSING

The question of what a green architecture might look like has been touched. At the present time, so few examples of a green approach in the built environment exist that it may be appropriate to glance back to the vernacular architectures that espoused the green approach for some clues. But it must be recognized that the green architecture does not mean that we return to such tradition. In the world of more than six billion people this is not possible. It is the attitude to materials and resources expressed in the vernacular approach that needs to be accommodated in the future architecture.

To survive on a planet with more than six billion people requires a shared system of values which arrived at both now and for the future. An architecture that would look at buildings with similar judgments, and determine beauty through performance might not be so bad. Maybe a green

approach to the built environment will succeed if not, at least it can provide again an architecture for all. However, it is not easy to embody all the green principles in a holistic approach to the built environment. Hence, it is not easy too to find buildings that embody all principles of green architecture, for a green architecture is yet to be realized.

4. REFERENCES

- ARNOLD, H.E. (1980), *Trees in Urban Design*, New York: Van Nostrand Reinhold, Co.
- BROPHY, et. al. (2000), *Sustainable Urban Design*, Ireland: Energy Research Group – University College Dublin.
- HAUGHTON, G., C. Hunter (1994), *Sustainable Cities*, London: JKP.
4. KOSTOF, SPIRO, (1992), *THE CITY ASSEMBLED, THE ELEMENTS OF URBAN FORM THROUGH HISTORY* LONDON: THAMES AND HUDSON LTD.
- KOSTOF, Spiro, (1992), *The City Shaped: Urban Patterns and Meaning Through History* London: Thames and Hudson Ltd.
- MACHARG, I.L. (1971), *Design with Nature*, New York: Doubleday, Garden City.
- ROSELAND, Mark. (1998), *Toward Sustainable Communities – Resources for Citizens and their Governments*, Canada: New Society Publisher.
- SAUNDERS, P.J.W, and WOOD, C.M, (1977), *Plants and Air Pollution*, in: Clouston, Brian (1977). *Landscape Design with Plants*, London: The Landscape Institute.
- VALE, Brenda, and VALE, Robert (1991), *Green Architecture: Design for a Sustainable Future*, London: Thames and Hudson Ltd.
- WATT Committee on Energy (1980), *An Assessment of Energy Resources*, London: Report No. 9.
- WCED (World Commission on Environment and Development),(1987), *Our Common Future (Brundtland Report)*, Oxford.